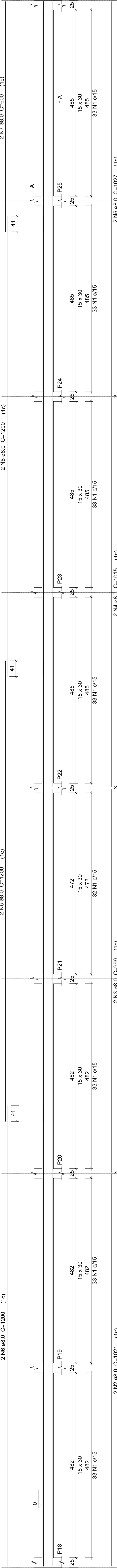


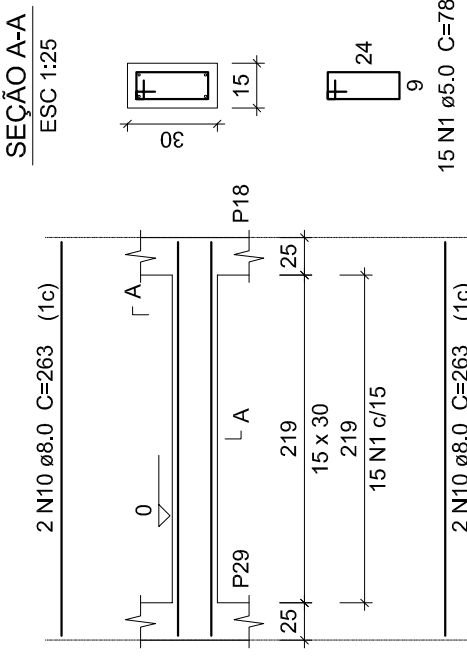
V3 V4

ESC: 1/50



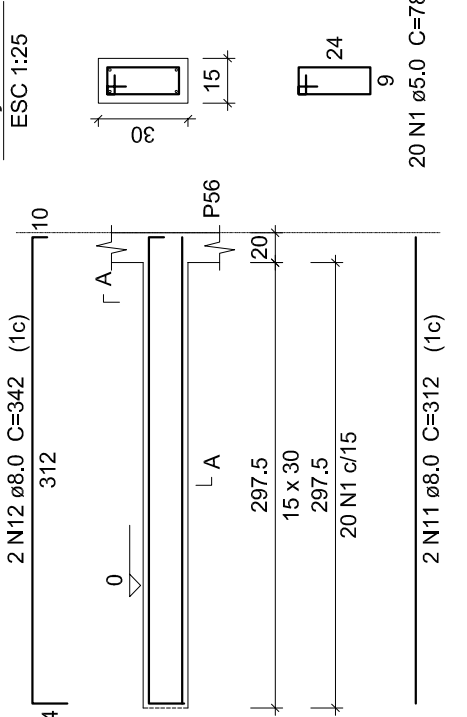
V6 V8 V10 V12 V15 V17 V19 V21 V22

ESC: 1/50



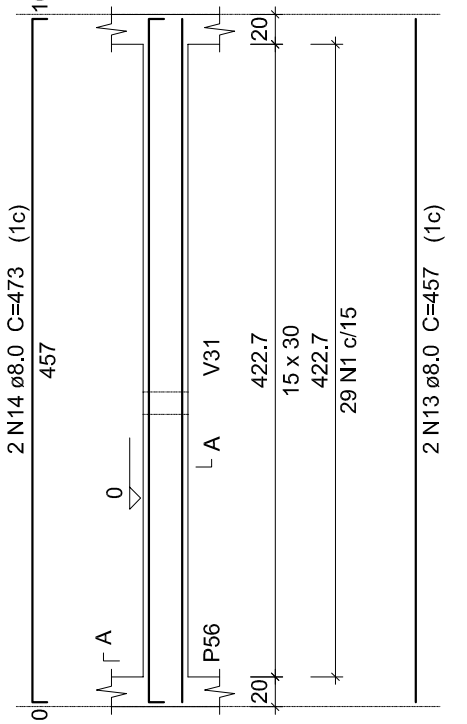
V25

ESC: 1/50



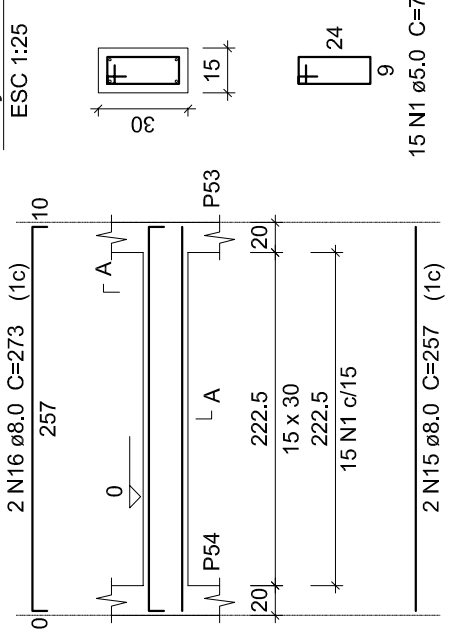
V26

ESC: 1/50



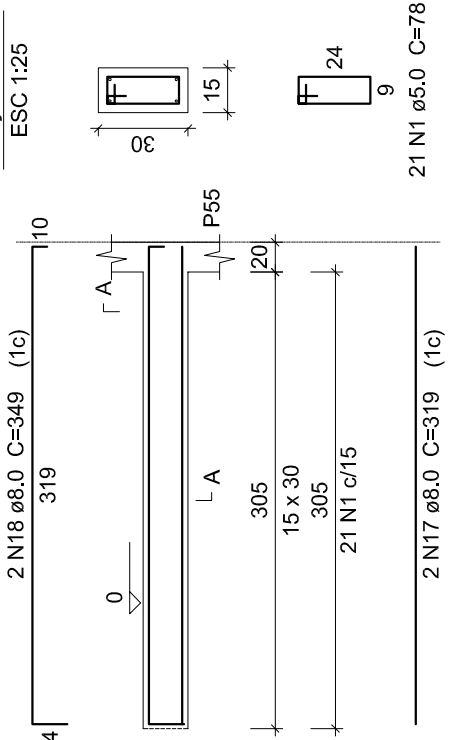
V27

ESC: 1/50



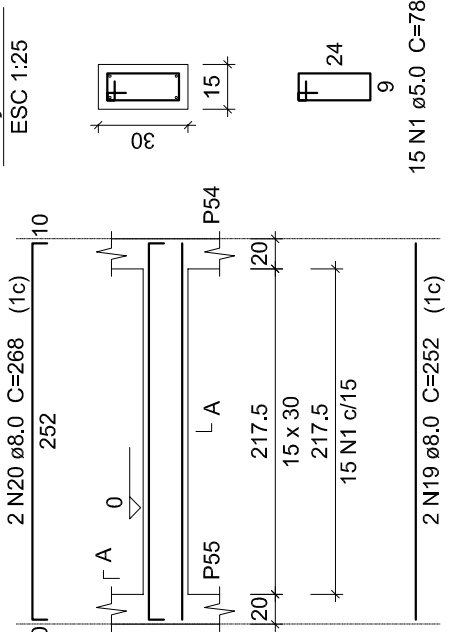
V28

ESC: 1/50



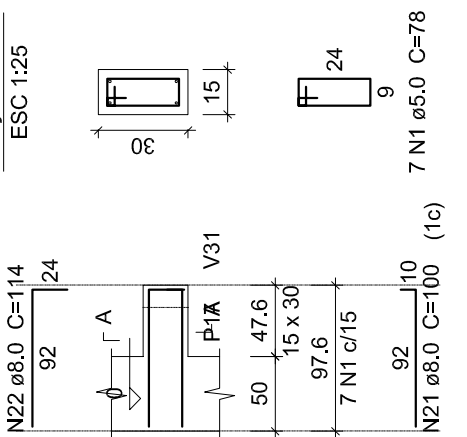
V29

ESC: 1/50



V30

ESC: 1/50



Relação do aço

AÇO	N	DIAM	Q	UNIT	C TOTAL
CA50	1	5,0	1227	78	95706
	2	8,0	4	1021	4084
	3	8,0	4	1015	4060
	4	8,0	4	1015	4060
	5	8,0	4	1027	4108
	6	8,0	114	1200	16800
	7	8,0	18	337	6066
	8	8,0	18	345	6210
	9	8,0	40	263	10520
	10	8,0	40	263	10520
	11	8,0	40	263	10520
	12	8,0	40	263	10520
	13	8,0	2	457	914
	14	8,0	2	473	946
	15	8,0	2	257	514
	16	8,0	2	342	684
	17	8,0	2	319	638
	18	8,0	2	349	698
	19	8,0	2	252	504
	20	8,0	2	252	504
	21	8,0	2	100	200
	22	8,0	2	114	228
	23	8,0	2	313	626
	24	8,0	2	313	626
	25	8,0	2	1166	2332
	26	8,0	2	338	676
	27	8,0	2	1059	2118
	28	8,0	2	1013	2026
	29	8,0	2	593	1186
	30	8,0	2	593	1186
	31	8,0	4	250	1000

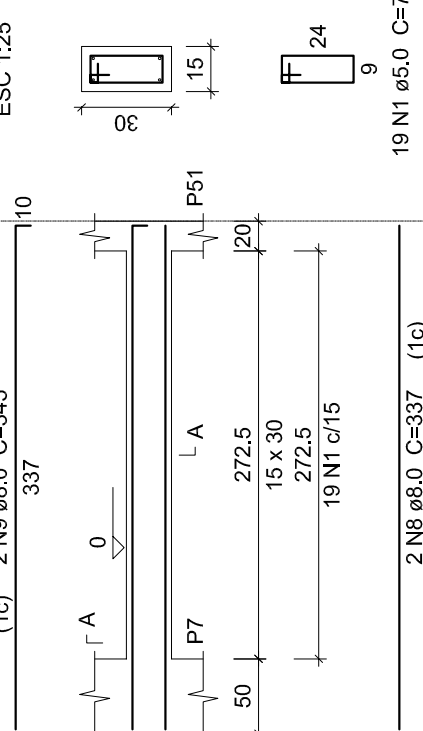
Resumo do aço

AÇO	DIAM	C TOTAL	PESO - 10 %
CA50	5,0	957,06	169
PESO TOTAL	8,0	780,0	344

Vol. de concreto total (C-25) = 6,68 m³
Área de forma total = 148,71 m²

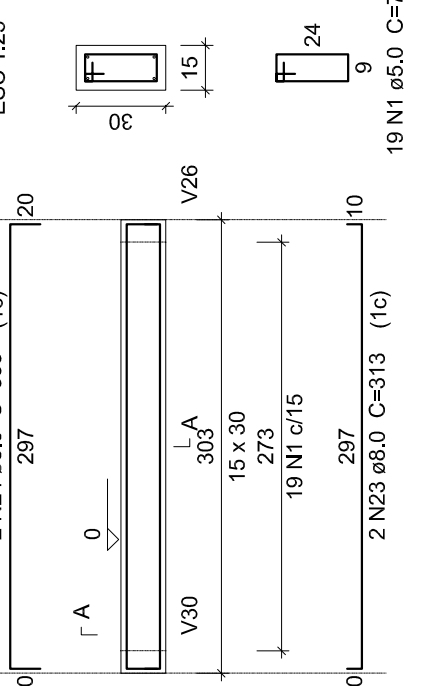
V5 V7 V9 V11 V13 V16 V18 V20 V33

ESC: 1/50



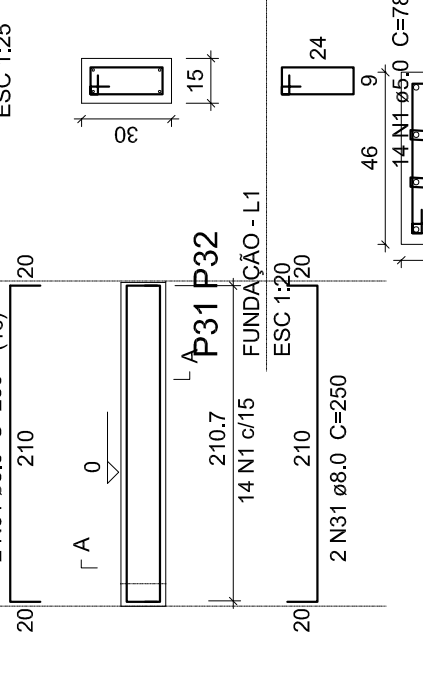
V31

ESC: 1/50



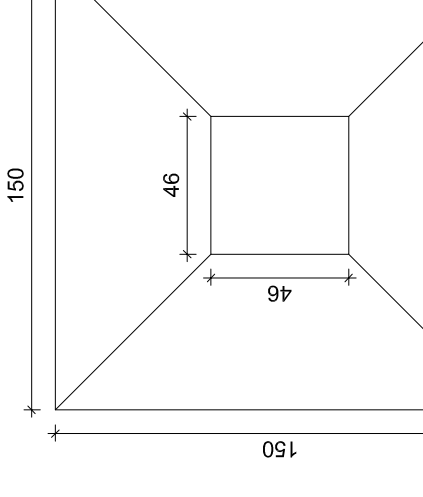
V32

ESC: 1/50



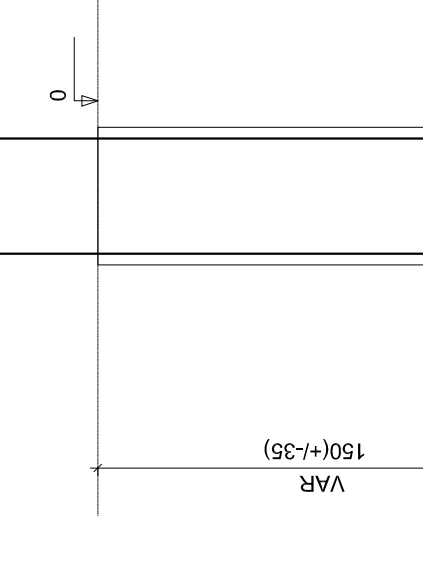
S31 S32

ESC: 1/25



S31 S32

ESC: 1/25



Relação do aço fundação

AÇO	N	DIAM	Q	UNIT	C TOTAL
CA50	1	5,0	224	86	19326
	2	5,0	450	86	38580
	3	5,0	38	172	6536
	4	5,0	152	55	8360
	5	6,3	288	119	34272
	6	6,3	44	119	5244
	7	8,0	42	VAR	VAR
	8	10,0	72	VAR	VAR
	9	10,0	24	VAR	VAR
	10	10,0	46	VAR	VAR

Resumo do aço

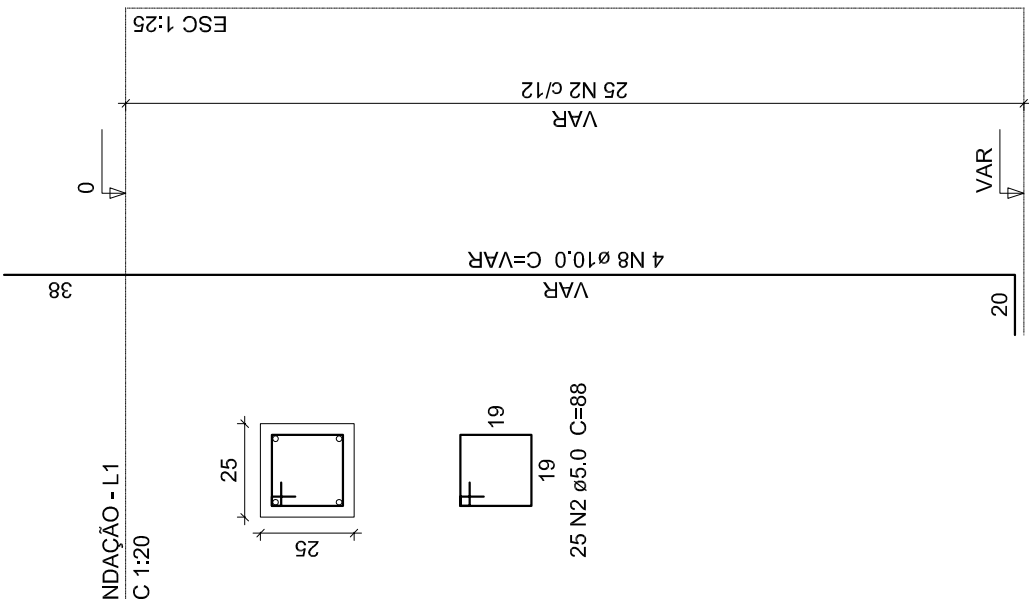
AÇO	DIAM	C TOTAL	PESO - 10 %
CA50	5,0	665,34	122,38
	6,3	900	242,3
	8,0	1386	261,7
PESO TOTAL	10,0	1386	261,7

Vol. de concreto total (C-25) = 13,34 m³
Área de forma total = 103,92 m²

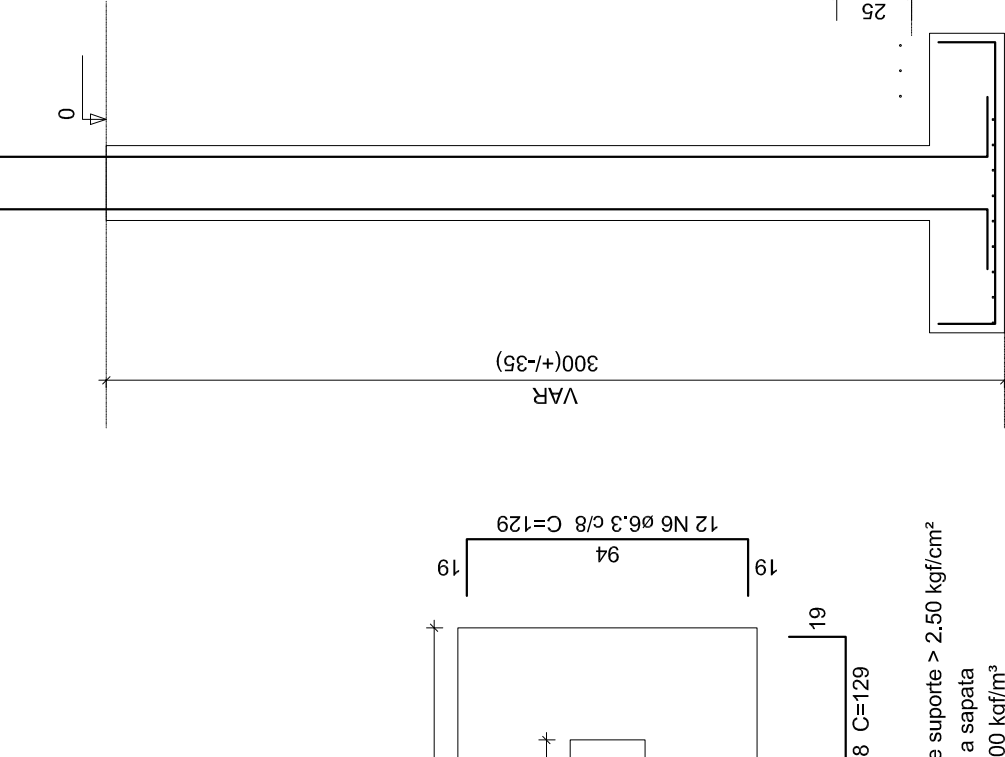
PLANTA DE VIGAS TERREO

ESC: 1/50

P13 P14 P15 P16 P17 P18 P19 P20 P21
P22 P23 P24 P25 P26 P27 P28 P29 P30

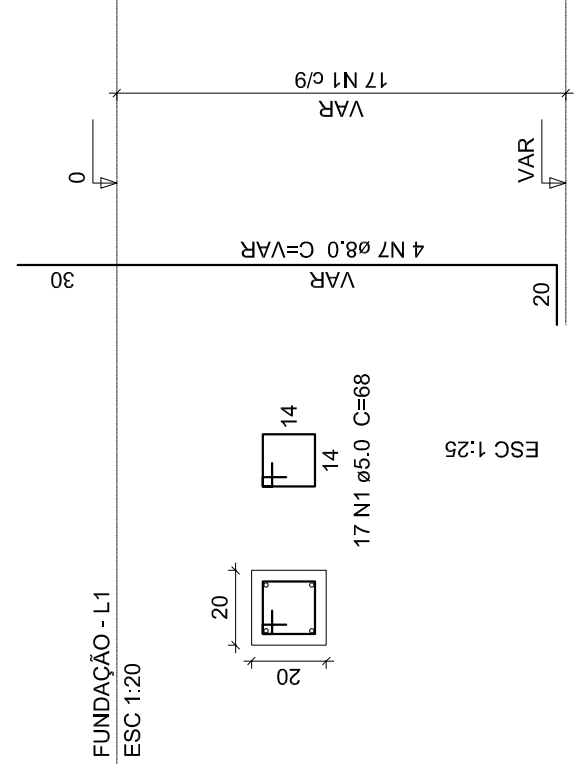


S13 S14 S15 S16 S17 S18 S19 S20 S21
S22 S23 S24 S25 S26 S27 S28 S29 S30



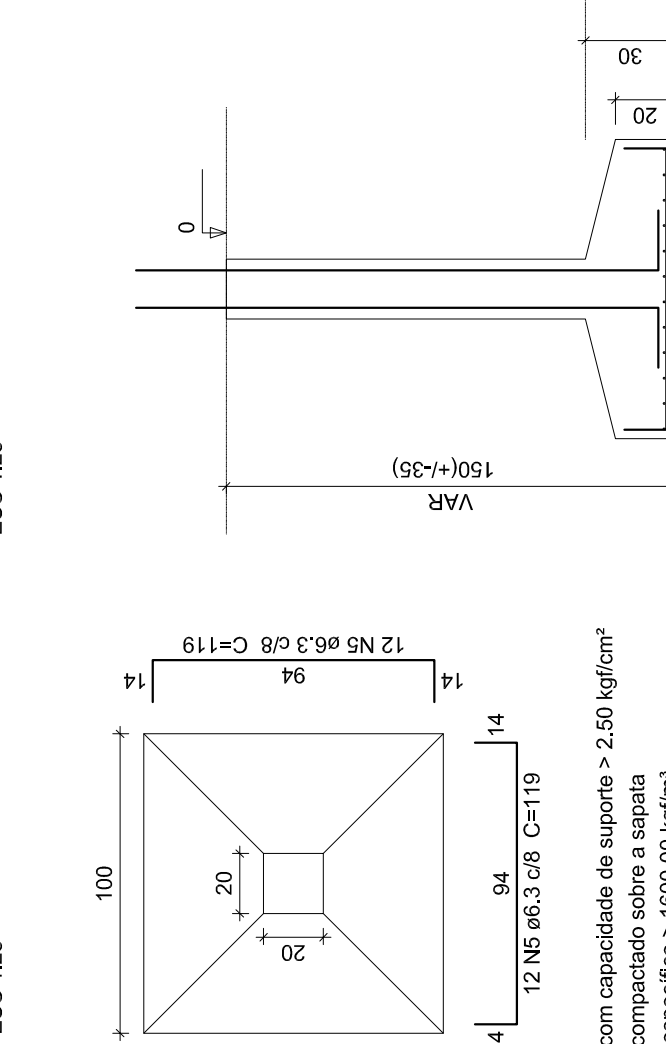
P1 P2 P3 P4 P5 P6 P7 P8 P9 P10 P11 P12 P33

ESC: 1/20



S1 S2 S3 S4 S5 S6 S7 S8 S9 S10 S11 S12 S33

ESC: 1/25



Solo com capacidade de suporte > 2.50 kgf/cm²
Solo compactado sobre a sapata
para especifico > 1600,00 kgf/m²

PLANTA DE FUNDAÇÃO

ESC: 1/20